

FORESTER

BY FOREST RIVER

THE BEST WAY
TO TRAVEL



A Berkshire Hathaway company.





FORESTER

BY FOREST RIVER

Tasteful design, combined with a unique combination of style, value and preferred amenities make travel in the Forester comfortable and loads of fun. Forester's unique split level design provides maximum headroom in the living area, while still offering pass-through storage on every floorplan. Plus, all Foresters are "Certified Green" by TRA Certification.

LE TOP FEATURES

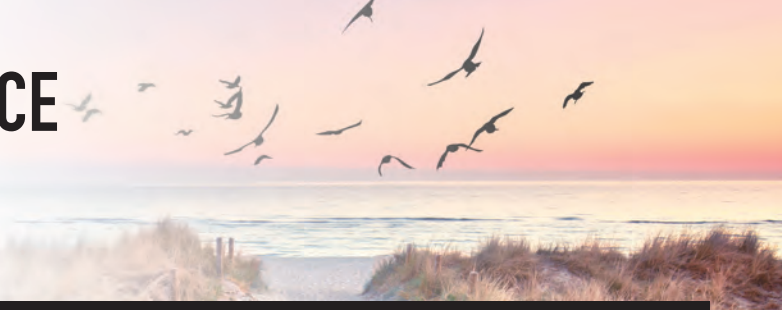
- Crowned, laminated fiberglass roof
- Two cab-over windows (Bunk area)
- Slide out awning toppers
- Heated enclosed tanks (N/A 2251SLE, 2551DSLE)
- Enclosed dump station (N/A 2251SLE, 2551DSLE)
- 40" 12V LED TV
- Integrated step
- Two large storage drawers in dinette
- Black-out roller shades
- 2" Thick gel coat sidewalls with lightweight composite waterproof material
- Upgraded appliances with 1.3 cu. ft. convection microwave
- 10.7 Cu. Ft. 12V refrigerator
- Side view and back-up cameras
- Maxx Air multi-speed power fan with cover
- High pressure oxygen infused shower head
- Optional solar powered 12V charging system (Additional panels can be easily added)

2851SLE shown with Vermont Oak cabinetry and Fieldstone Decor.





EXPERIENCE MORE



3251DSLE kid's zone with fold-down bunk, sofa sleeper, seat belts and an entertainment center, included on all LE models. Black Diamond Walnut cabinetry and Marble decor shown.

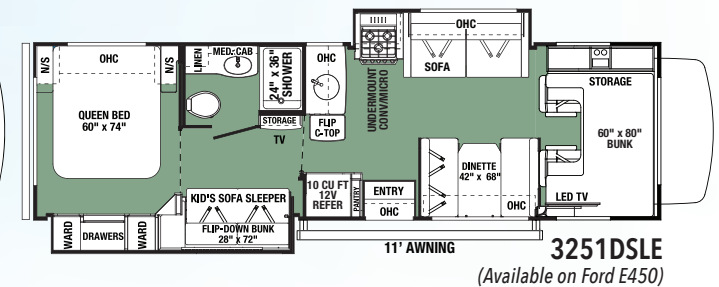
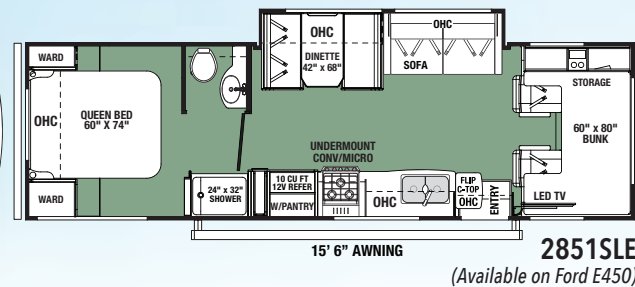
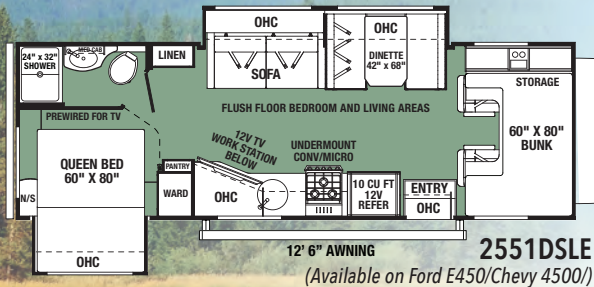
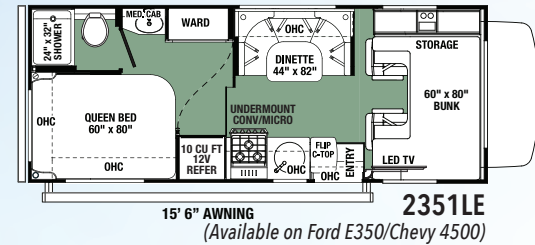
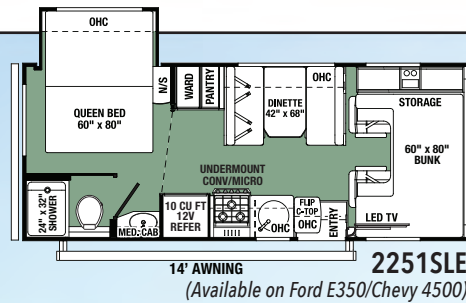
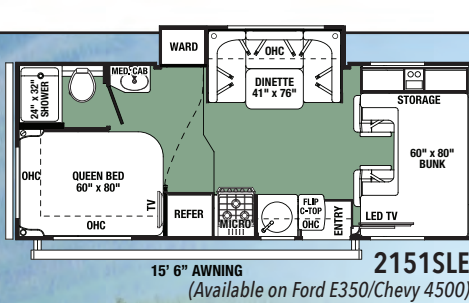
LE PREMIER PACKAGE

Every LE model includes this package.

- Back-up camera/side view cameras with monitor
- Fiberglass front cap
- Pioneer in-dash premium sound system
- Undermount 1.3 cu. ft. convection microwave
- 10.7 Cu. ft. 12V refrigerator



FORD / CHEVY	2151SLE	2251SLE	2351LE	2551DSLE	2851SLE	3251DSLE
Wheelbase	158" • 159"	158" • 159"	158" • 159"	190" • 191"	220"	220"
GVWR	12500 • 14200	12500 • 14200	12500 • 14200	14500 • 14200	14500	14500
GAWRR	9600 • 9600	9600 • 9600	9600 • 9600	9600 • 9600	9600	9600
GAWRF	5000 • 4600	5000 • 4600	5000 • 4600	5000 • 4600	5000	5000
UVW	10624 • 10452	10550 • 10590	10100 • 10130	11443 • 11456	11742	12580
GCWR	18500 • 20000	18500 • 20000	18500 • 20000	22000 • 20000	22000	22000
CCC	2327 • 3748	2695 • 3610	2656 • 4070	3057 • 2744	2758	1920
Fuel Capacity (Gal)	40 • 57	40 • 57	40 • 57	55 • 57	55	55
Hitch Rating/Tongue Weight	7500/500 5000/500	7500/500 5000/500	7500/500 5000/500	7500/500 5000/500	7500/500	7500/500
Length - Bumper To Bumper	24'-6" • 25'	23'-10" • 24'-4"	24'-6" • 25'	29'-4" • 29'-10"	31'-5"	32'-3"
Exterior Height With A/C	11'-3"	11'-3"	11'-3"	11'-3"	11'-3"	11'-3"
Exterior Width	101"	101"	101"	101"	101"	101"
Interior Width	95.5"	95.5"	95.5"	95.5"	95.5"	95.5"
Interior Height Front/Rear	84"/77"	84"/77"	84"/77"	84"/77"	84"/77"	84"/77"
Fresh/Grey/Black Water (Gal)	44/39/39	35/32/27	44/39/39	44/39/39	44/39/39	44/39/39
L.P. Capacity (Gal)	9.8	9.8	9.8	9.8	9.8	9.8
Awning Length	15'-6"	14'	15'-6"	12'-6"	15'-6"	11'
Water Heater (Gal)	6	6	6	6	6	6
Exterior Storage (Cu. Ft.)	61	32	61	45	102	80





2861DS shown with Black Diamond Walnut cabinetry and Marble decor.

CLASSIC TOP FEATURES

- Lane detection warning system
- 7' Ceiling height
- Crowned, laminated fiberglass roof
- Trekker cap option with built-in entertainment center and storage IPO overhead bunk
- 2" Thick gel coat sidewalls with lightweight composite waterproof material
- EZ Ryde premium suspension system includes Bilstein shocks, Firestone Ride-Rite™ air springs and Hellwig sway bar
- Heated enclosed tanks
- Water filtration system
- Electric awning with LED lights
- Valve extensions for rear tires
- 7,500 Lb. tow rating (Ford only)
- Integrated entry step
- Two cab-over windows (Bunk area)
- Upgraded appliances with 1.3 cu. ft. convection microwave
- 10.7 Cu. Ft. 12V refrigerator
- 40" 12V LED TV (32" on 3011DS)
- Standard side view and back-up cameras
- Slide out awning toppers
- Front cab magnetic black-out shades enhance privacy
- Surround sound with exterior speakers
- Premium in-dash CarPlay/Android Play stereo
- Maxx Air multi-speed power fan with cover
- Solar prep
- Optional solar powered 12V charging system (Additional panels can be easily added)



Classic shown with seamless front cap for enhanced aerodynamics and two large overhead bunk windows for pass-through ventilation.

CLASSIC PREMIUM CAMPING PACKAGE

Every Classic model includes this package.

- EZ Ryde premium Suspension System (N/A Chevy)
- Lane detection monitoring system
- Undermount 1.3 cu. ft. convection microwave
- 10.7 Cu. ft. 12V refrigerator
- Heated remote exterior mirrors
- Back-up camera/side view cameras with monitor
- In-dash CarPlay/Android Play stereo
- In-house entertainment center with outside speakers
- 12V bedroom TV
- Slide room toppers
- Ultra leather driver/passenger seating (N/A Chevy)
- Fiberglass running boards
- LP Quick connect



**ENJOY
MORE**

3051S the optional Trekker cap includes a storage-friendly entertainment center. Shown in Vermont Oak.



CLASSIC

Classic is shown with Diablo Red full body paint.



SAFE, COMFORTABLE DRIVING FEATURES

LANE DETECTION WARNING SYSTEM

(N/A on LE and Transit models)

- NEW Voyager® VBSD1 Blind Spot Detection System
- Specifically engineered to enhance Class C motorhome safety
- Visual and audible alerts warn drivers of obstacles not visible in the rear view mirror
- Uses radar detecting sensors on the rear corners of the motorhome that communicate with LED beacons in the cab
- Beacons remain lit until the blind spot is clear
- Beacon flashes with an audible alert when turn signal is engaged



EZRYDE SUSPENSION SYSTEM

Our upgraded suspension system enhances comfort and performance for a more enjoyable drive. The system includes: Bilstein® Shocks, Hellwig RV Sway Bars and Firestone Ride-Rite Air Springs Available on Classic models, built on Ford E-450. (N/A on Chevy)

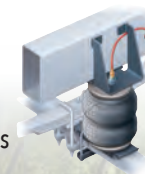


Hellwig RV Sway Bar Advantages

- Increase driving stability at highway speeds and reduce the effects of crosswind
- Improve traction and cornering abilities for safer driving
- No more white knuckle driving
- Most effective handling upgrade available for RVs
- Lifetime warranty

Firestone Ride-Rite Advantages

- Adjustable air springs provide an improved ride, and a better way to balance loads



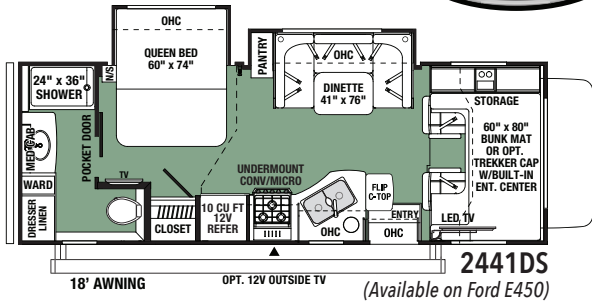
Bilstein® Shock Advantages

- Monotube gas pressure shock absorbers virtually eliminate excessive sway and bounce
- Tested and tuned for your specific motorhome, for a safe and enjoyable ride
- Improved handling and consistent performance
- 228% Larger piston creates greater sensitivity and tighter vehicle control
- Lifetime warranty

FORESTER

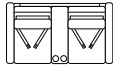
BY FOREST RIVER

2861DS shown with Black Diamond Walnut cabinetry and Marble decor.

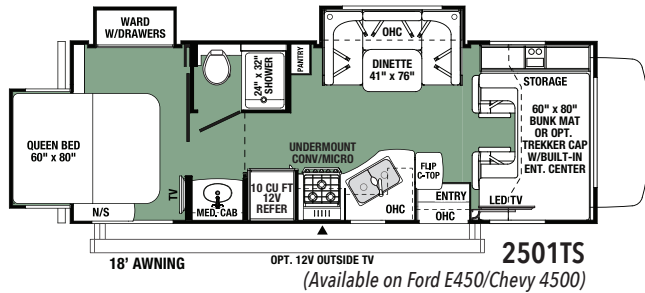


18' AWNING OPT. 12V OUTSIDE TV
2441DS (Available on Ford E450)

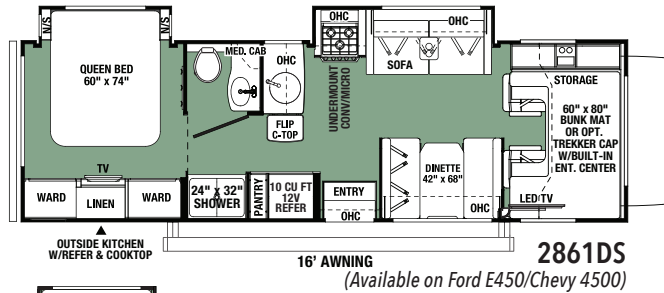
OPTIONS



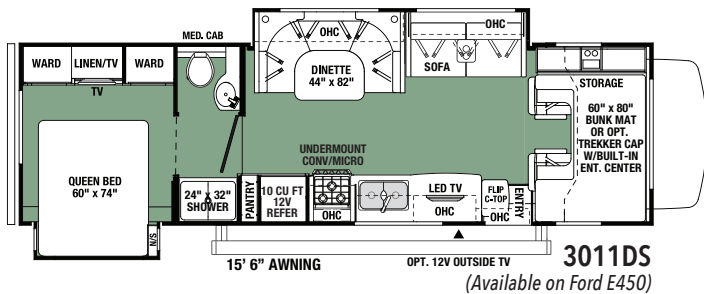
12V POWER THEATER SEATING



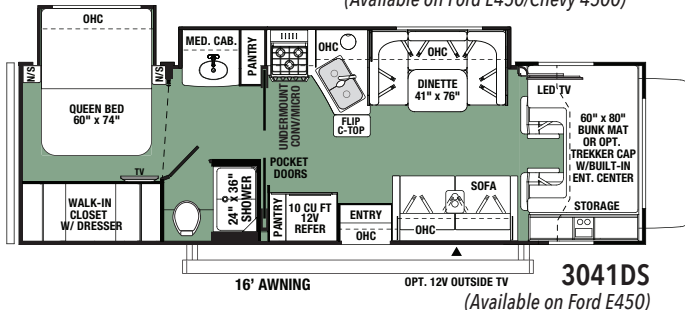
18' AWNING OPT. 12V OUTSIDE TV
2501TS (Available on Ford E450/Chevy 4500)



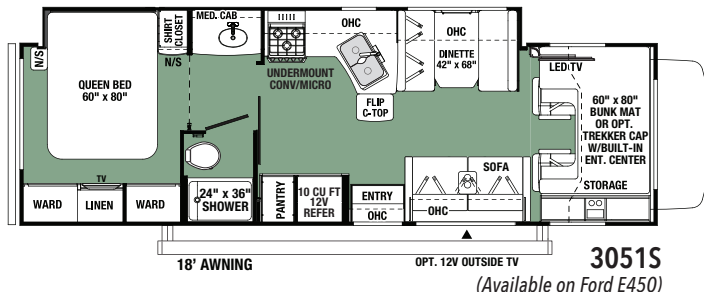
16' AWNING (Available on Ford E450/Chevy 4500)
2861DS



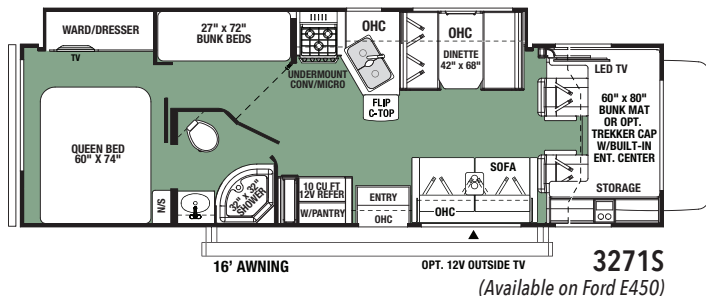
15' 6\"/>



16' AWNING OPT. 12V OUTSIDE TV
3041DS (Available on Ford E450)



18' AWNING OPT. 12V OUTSIDE TV
3051S (Available on Ford E450)



16' AWNING OPT. 12V OUTSIDE TV
3271S (Available on Ford E450)



2861DS Shown with outside kitchen, including an electric induction cooktop.

GVWR (Gross Vehicle Weight Rating) - is the maximum permissible weight of the unit when fully loaded. It includes all weights, inclusive of all fluids, occupants, cargo, optional equipment and accessories. For safety and product performance do NOT exceed the GVWR. **GCWR (Gross Combined Weight Rating)** - is the maximum permissible loaded weight of your motor home and any towed trailer or towed vehicle. Actual GCWR of this vehicle may be limited by the sum of the GVWR and the installed hitch receiver maximum capacity rating; see hitch rating label for detail.

GAWR (Gross Axle Weight Rating) - is the maximum permissible weight, including cargo, fluids, optional equipment and accessories that can be safely supported by each axle. **UVW (Unloaded Vehicle Weight)**** - is the typical weight of the unit as manufactured at the factory. It includes all weight at the unit's axle(s), including full fuel, all fluids and LP Gas. The UVW does not include cargo, fresh potable water, additional optional equipment or dealer installed accessories.

*Estimated Average based on standard build optional equipment. **CCC (Cargo Carrying Capacity)**** - is the amount of weight available for fresh potable water, cargo, passengers, additional optional equipment and accessories. CCC is equal to GVWR minus UVW. Available CCC should accommodate fresh potable water (8.3 lbs per gallon). Before filling the fresh water tank, empty the black and gray tanks to provide for more cargo capacity.

**Estimated average based on standard build optional equipment. Each Forest River RV is weighed at the manufacturing facility prior to shipping. A label identifying the unloaded vehicle weight of the actual unit and the cargo carrying capacity is applied to every Forest River RV prior to leaving our facilities. The load capacity of your unit is designated by weight, not by volume, so you cannot necessarily use all available space when loading your unit. Actual towing capacity is dependent upon your particular loading and towing circumstances, which includes the GVWR, GAWR and GCWR as well as adequate trailer brakes. Please refer to the Operator's Manual of your vehicle for further towing information.

PAINT OPTIONS



STANDARD Exterior graphics



DIABLO RED Full body paint
(Also available in Midnight Blue)

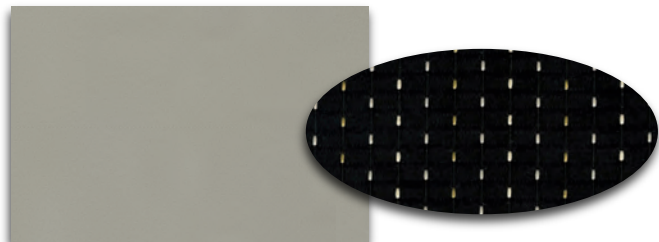
FORD • CHEVY CLASSIC	2441DS	2501TS	2861DS	3011DS	3041DS	3051S	3271S
Wheelbase	182"	182" • 183"	202" • 203"	220"	220"	220"	220"
GVWR	14500	14500 • 14200	14500 • 14200	14500	14500	14500	14500
GAWRR	9600	9600 • 9600	9600 • 9600	9600	9600	9600	9600
GAWRF	5000	5000 • 4600	5000 • 4600	5000	5000	5000	5000
UVW	11690	11873 • 11910	12500 • 12550	12780	12930	12910	12917
GCWR	22000	22000 • 20000	22000 • 20000	22000	22000	22000	22000
CCC	2810	2627 • 2290	2000 • 1650	1720	1570	1590	1583
Fuel Capacity (Gal.)	55	55 • 57	55 • 57	55	55	55	55
Hitch Rating/Tongue Weight	7500/500	7500/500 • 5000/500	7500/500 • 5000/500	7500/500	7500/500	7500/500	7500/500
Length - Bumper To Bumper	27'-1"	27'-1" • 27'-7"	30'-9" • 31'-3"	32'-3"	32'-3"	31'-11"	31' - 11"
Exterior Height With A/C	11'-3"	11'-3"	11'-3"	11'-3"	11'-3"	11'-3"	11'-3"
Exterior Width	101"	101"	101"	101"	101"	101"	101"
Interior Width	95.5"	95.5"	95.5"	95.5"	95.5"	95.5"	95.5"
Interior Height Front/Rear	84"/77"	84"/77"	84"/77"	84"/77"	84"/77"	84"/77"	84"/77"
Fresh/Grey/Black Water (Gal.)	44/39/39	44/39/39	44/39/39	44/39/39	44/39/39	44/39/39	44/39/39
L.P. Capacity (Gal.)	9.8	9.8	9.8	9.8	9.8	9.8	9.8
Awning Length	18'	18'	16'	15' - 6"	16'	18'	16'
Water Heater (Gal.)	6	6	6	6	6	6	6
Exterior Storage (Cu. Ft.)	50	50	62.5	101.7	78	81.8	81.8

CABINetry

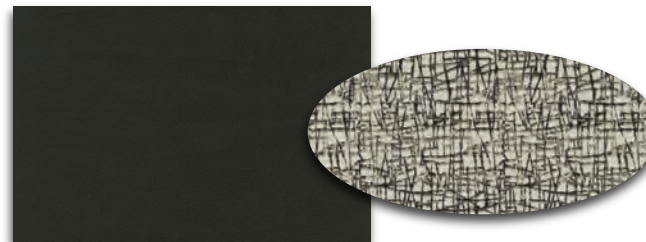


DECOR

MARBLE



FIELDSTONE



Check us out at: www.forestriverinc.com/forester

ENHANCE YOUR COOL

OPTIONAL DUAL AIR CONDITIONING SYSTEM

(Available on 2861DS, 3011DS, 3041DS, 3051S, 3271S)

- Power shedding system allows smooth operation on a 30 AMP service



NOW PREWIRED FOR SOLAR ON THE SIDE*

POWERFUL SOLAR CHARGING KIT

- Freedom to explore off-grid locations
- High-efficiency monocrystalline solar panel
- Expandable up to 500 watts
- Low-profile panel, invisible from the road

DIGITAL SOLAR CONTROLLER

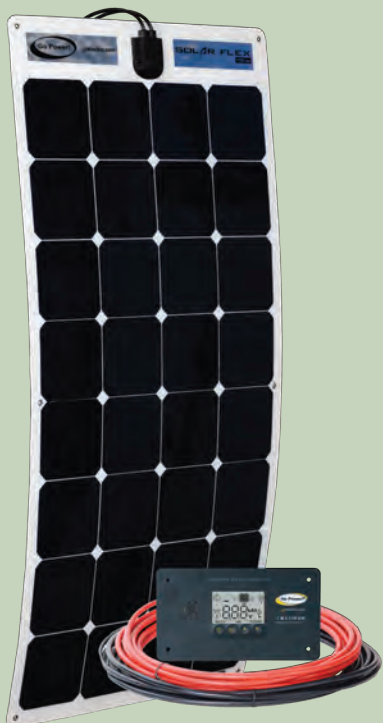
- Produces more charging power
- Displays solar charge and battery capacity

SOLAR ON THE SIDE PORT

- Pre-wired for a portable solar kit. Simply plug in an 80 or 120-watt portable solar kit!



SOLAR ON THE SIDE™ solar connection



WHY GO SOLAR?



SAVINGS
Extends battery life by 50%



ZERO FUEL
No generator required to run



QUIET
Alternative to generators



RENEWABLE
and safe power source

* Optional SOLAR ON BOARD upgrade is available



Large panoramic windows with black-out shades for plenty of fresh air and natural light.



12V 4-Port USB charging station (Living room/bedroom, N/A LE)



Cordless charging plate



10.7 Cu. Ft. 12V Refrigerator



LED lights generate almost no heat compared to incandescent lights and use substantially less power.



Winterizing tube provides easy access for quick maintenance includes bypass valve.



Forester is equipped with a residential mattress for a good night's sleep.



Outside speakers

This compact unit filters water for the entire coach, eliminating unwanted contaminants and odors, ensuring safe drinking water for you and your family. (N/A LE)



Optional exterior entertainment center (NA LE and Transit)



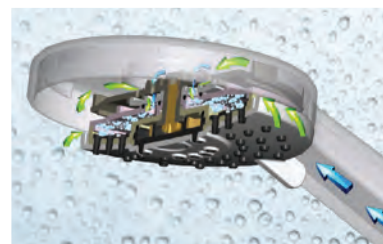
Forester is appointed with rich residential style hardwood cabinetry with ball bearing drawer glides.



Two batteries in a single housing for easy access. (One battery LE and Transit)



This Winegard HD digitally amplified antenna enhances reception.



High pressure, oxygen infused shower head conserves water, energy and tank life.



Optional 12V power theater seating with adjustable foot rests (Classic only).



Durable, easy to clean (R-18) crowned fiberglass roof sheds water and doesn't cause black streaks like a rubber roof.



Heated/enclosed holding tanks use warm air from the furnace to protect tanks and valves. (N/A 2251SLE, 2551DSLE, MBS and Transit)



All models include Atwood ducts for high performance air flow throughout the coach and front cabover.



Forester's entry step is integrated into the sidewall. No more slippery, or damaged power steps. (N/A MBS)



Comfortable sofa with a drink tray converts to a convenient sleeping area.



Extend and retract the power awning with LED lights at just the push of a button. Both arms are adjustable to get just the right angle.



Maxx Air multi-speed power fan recirculates air throughout the entire coach.

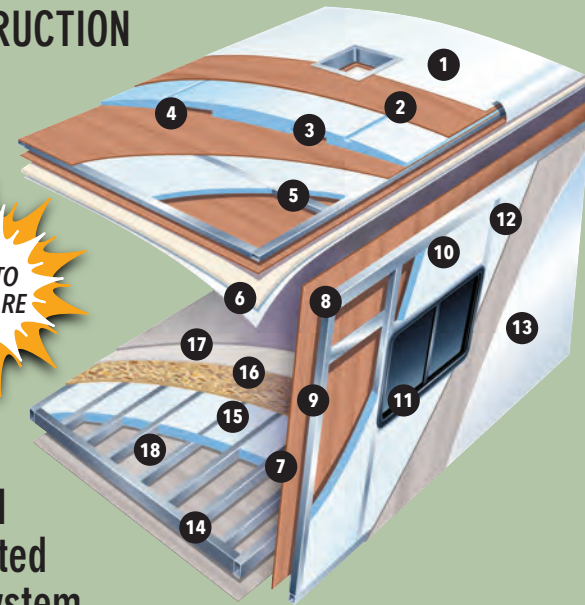


The Sony touch screen in-dash stereo system pairs up with your smart phone for access to Apple CarPlay/Android Play GPS and other applications. (N/A LE, MBS and Transit)



This multimedia entertainment system features AM/FM, Bluetooth, plus outside speaker control.

CONSTRUCTION



Multi-Layered Laminated Roof System

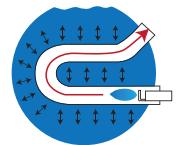
- | | |
|----------------------------|------------------------------|
| 1. Crowned Fiberglass Roof | 4. A/C Ducts |
| 2. Luan Decking | 5. Tubular Aluminum Framing |
| 3. Block Foam Insulation | 6. Interior Ceiling Material |

Vacuum-Bond Laminated Sidewalls

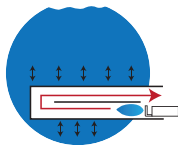
- | |
|---|
| 7. Decorative Interior Wall Board |
| 8. Tubular Aluminum Framing |
| 9. EGS Metal Backers |
| 10. Block Foam Insulation |
| 11. Opening Framed In Aluminum |
| 12. Lightweight Composite Waterproof Material |
| 13. Gelcoat Fiberglass Exterior |

Vacuum-Bond Laminated Floor System

- | | |
|-----------------------------|--------------------------------------|
| 14. Fiberglass Bottom Board | 17. Resilient Shaw Floors Throughout |
| 15. Block Foam Insulation | 18. Aluminum Framing |
| 16. Seamless Floor Decking | |



ATWOOD WATER HEATER



TRADITIONAL WATER HEATER

Atwood 18 GPH water heaters (6 gallon tank) out perform traditional 10 and 12 gallon tank water heaters. They're also 50% lighter and have no anode rod to replace.

Progressive Dynamics patented 4-stage Charge Wizard® converter system has been shown to increase battery life by 2 to 3 times or more. It constantly monitors battery usage and voltage, then selects one of four operating modes to properly charge and maintain the battery. Boost, Normal, Storage and Equalization.



7,500 Lb. Tow capacity (Ford E450)



This holding tank vent cap eliminates odors and gases from the holding tanks and exhausts them out the roof, without the use of costly chemicals.

FORESTER VS. THE COMPETITION



FORESTER
2" Wall with Block Foam and SuperLite (R-10)



SUPER LITE WALLS
All models use SuperLite composite instead of a wood substrate on the sidewalls. It is lightweight, formaldehyde free and is not affected by moisture.



COMPETITION
1.5" Wall with Luan (R-6)

INTERACTIVE MOBILE MANUALS

Download our mobile app or visit our dynamic online manual to enhance your ownership experience. These interactive options provide incredible ease and insight into use, maintenance and enjoyment of your Forester product. Ranging from "How-To" videos, pictures and illustrations of various components, systems and features, to fully searchable content and downloadable PDFs for individual component owner's manuals, answers are always just a click away. View the online manual at www.forestriverinc.com/ownersmanuals, or download our FREE app from the App Store or GooglePlay!



MERCEDES-BENZ® SERIES

The quality you've come to expect, paired with a fuel efficient diesel platform.



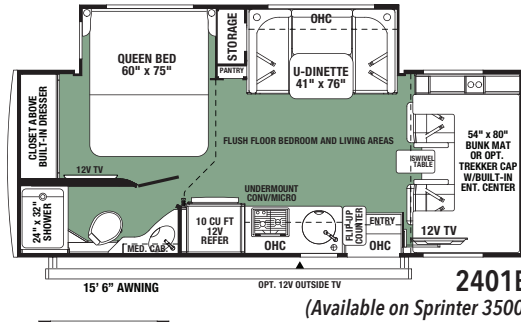
Mercedes-Benz

MBS TOP FEATURES

- Lane detection warning system
- Multiplex smart phone remote and monitor system
- Front cab magnetic black-out shades enhance privacy
- Trekker cap option with built-in entertainment center and storage IPO overhead bunk
- Swivel driver and passenger seats with removable table
- Adjustable, electric awning with LED light strip
- Crowned, laminated fiberglass roof
- Standard side view and back-up camera
- Water filtration system
- Upgraded appliances with 1.3 cu. ft. convection microwave
- 10.7 Cu. ft. 12V refrigerator
- Gel coat sidewalls with "Superlight" composite
- Standard rear stabilizer jacks
- Slide out awning toppers
- Optional 3.2KW diesel generator
- Optional solar powered 12V charging system
- Optional 4-Point hydraulic auto-leveling system



BLUETEC DIESEL ENGINE
BlueTec SCR Technology is one of the world's cleanest diesel engines, delivering more power, while producing fewer emissions. The 3.0l V-6 engine boasts 188 hp and 325 lb-ft of rated torque.



2401Q shown with standard power leather swivel seats and booster cushions with Black Diamond Walnut cabinetry.



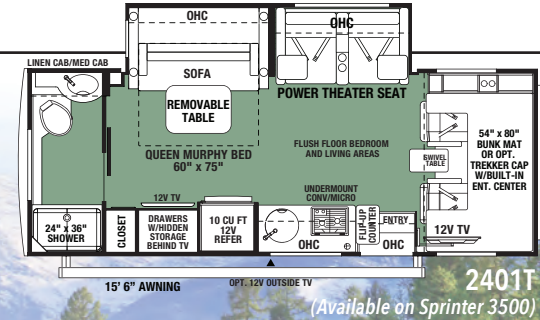
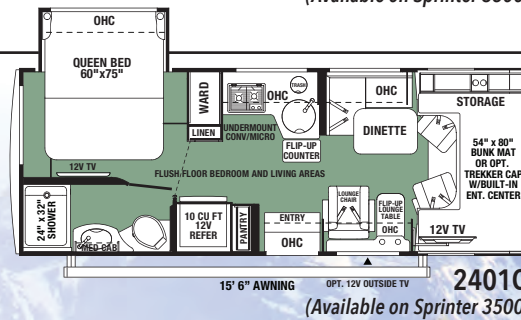
MBS PREMIUM CAMPING PACKAGE

Every MBS model includes this package.

- Undermount 1.3 cu. ft. convection microwave
- Smart phone in-coach remote system
- Lane detection warning system
- Back-up camera/side view cameras with overhead rear view mirror monitor
- In-dash Car/Android Play stereo
- In-house entertainment center with outside speakers
- 10.7 Cu. ft. 12V refrigerator
- 12V bedroom TV
- Slide room toppers
- Rear stabilizer jacks
- Privacy front cab magnetic black out shades
- Power leather driver/passenger swivel seating with boosters
- Solid surface kitchen countertops
- Fiberglass running boards
- LP Quick connect



FORESTER MBS	2401B	2401Q	2401T
Wheelbase	170.3"	170.3"	170.3"
GVWR	11030	11030	11030
GAWRR	7720	7720	7720
GAWRF	4080	4080	4080
UVW	9951	9948	TBD
GCWR	15250	15250	15250
CCC	1079	1082	TBD
Fuel Capacity (Gal)	26.4	26.4	26.4
Hitch Rating/Tongue Weight	4200/420	4200/420	4200/420
Length - Bumper To Bumper	25'-5"	25'-5"	25'-5"
Exterior Height With A/C	11'-3"	11'-3"	11'-3"
Exterior Width	94.5"	94.5"	94.5"
Interior Width	91"	91"	91"
Interior Height Front/Rear	81"	81"	81"
Fresh/Grey/Black Water (Gal)	35	35	35
L.P. Capacity (Gal)	16.6	16.6	16.6
Awning Length	15'-6"	15'-6"	15'-6"
Water Heater (Gal)	6	6	6
Exterior Storage (Cu. Ft.)	40	29	TBD



Both MBS and Transit models are available with standard graphics and a choice of two full body paint schemes.



STANDARD Exterior graphics shown on Classic

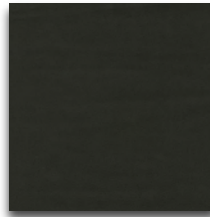
OBSDIAN Full body paint shown on MBS



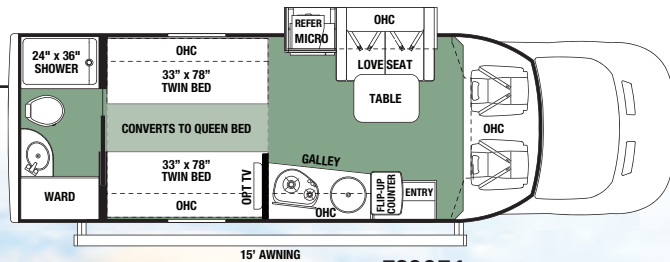
TRANSIT SERIES

The ultra-light Forester TS is engineered for fuel efficiency with eco-friendly building materials.

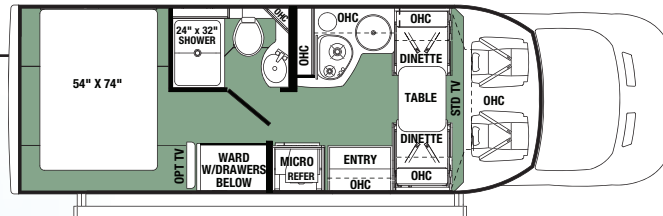
SLATE DECOR



TS2381 shown in Black Diamond Walnut cabinetry with Slate decor.



15' AWNING
TS2371
(Ford EcoBoost 3.5L gas engine)



15' AWNING
TS2381
(Ford EcoBoost 3.5L gas engine)

TRANSIT TOP FEATURES

- Engineered for fuel efficiency
- Ultra-light, eco-friendly building materials
- Frameless windows
- Class-leading, pass-through storage
- Residential style cabinetry
- 12V LED TV
- Ford EcoBoost 3.5L gas engine
- 10 Speed automatic transmission
- 8" Touch screen Ford Sync radio
- 5.3 Cu. ft. Eurostyle refrigerator operates on 12V/110/LP
- All enclosed bathrooms with privacy door (No wet baths)
- Passenger swivel seat
- Back-up and side view cameras
- Power awning with LED light strip
- Interior surround sound entertainment system
- Exterior speakers
- Truma Combi electric heat and high efficiency water heater
- TS2371 includes power twin beds that convert into a queen size bed
- Optional all wheel drive



PEWTER Full body paint shown on Transit

FORESTER TS	TS2371	TS2381
Wheelbase	178	178
GVWR	11000	11000
GAWRR	7275	7275
GAWRF	4130	4130
UVW	8714	8145
GCWR	13500	13500
CCC	1646	2215
Fuel Capacity (Gal)	25	25
Length - Bumper To Bumper	26'-1"	25'-6"
Exterior Height With A/C	10'-5"	10'-5"
Exterior Width	87"	87"
Interior Width	84"	84"
Interior Height Front/Rear	78"	78"
Fresh/Grey/Black Water (Gal)	35/30/28	35/30/30
L.P. Capacity (Gal)	9.8	9.8
Awning Length	15'	15'
Water Heater (Gal)	2.5	2.5
Exterior Storage (Cu. Ft.)	30.5	29

STANDARD FEATURES & OPTIONS

O: OPTION • S: STANDARD • -: NOT APPLICABLE

WARRANTY	LE	CL	MBS	TS
12 Months/12,000 mile basic limited warranty	S	S	S	S
Chassis warranty (see owners manual)				
SYSTEMS	LE	CL	MBS	TS
Battery disconnect	S	S	S	S
Water heater bypass	S	S	S	S
(2) Deep cycle coach batteries (1 battery in LE and Transit)	S	S	S	S
"Easy Access" battery in step-well	S	S	S	S
30 Amp service with power cord	S	S	S	S
60 Amp Progressive Dynamics converter	S	S	S	S
6 Gallon DSI gas/electric water heater	S	S	S	-
30,000 BTU furnace	S	S	S	-
Truma Combi water heater/furnace	-	-	-	S
Emergency start switch	S	S	-	S
Satellite/cable connection	S	S	S	S
13,500 BTU ceiling ducted roof air	S	S	S	S
Optional dual A/C with power shedding system	-	O	-	-
4.0 KW Onan Microquiet generator	S	S	-	-
3.6 KW Onan LP generator (diesel generator option available)	-	-	S	-
2.8 KW Onan Gas generator (only available on gasoline model)	-	-	-	S
Automatic generator transfer switch	-	S	S	S
EZ Ryde upgraded suspension system (Ford only)	-	S	-	-
Water filtration system	-	S	S	S
Heated, enclosed holding tanks and valves (N/A 2251SLE, 2551DSLE)	S	S	-	-
Arctic Package (12V tank heaters)	O	O	S	O
15K BTU A/C with heat pump	O	O	O	-
CO, LP and smoke detector	S	S	S	S
Winegard digital antenna	S	S	S	S
Firefly multiplex monitoring system with smart phone remote	-	-	S	-
Solar powered 12V charging system	O	O	O	O
EXTERIOR	LE	CL	MBS	TS
2" Aluminum framed laminated sidewalls	S	S	-	-
1.5" Aluminum framed laminated sidewalls	-	-	S	S
Superlite composite substrate	S	S	S	S
Gel Coat exterior fiberglass	S	S	S	S
Block foam insulation	S	S	S	S
Power patio awning with LED light strip	S	S	S	S
Slide-out awnings	S	S	S	S
Fiberglass roof	S	S	S	S
One-piece fiberglass front cap	S	S	S	S
LED exterior lights	S	S	S	S
Stainless steel wheel liners	-	S	S	S
Valve stem extensions	-	S	S	-
Roto-cast storage compartments	S	S	S	S
Driver side security light	-	S	S	-
Fiberglass running boards	-	S	S	S
Aluminum running boards	O	-	-	-
110V, GFI protected exterior receptacle	S	S	S	S
Tinted sliding windows	S	S	-	-
Tinted frameless windows	-	-	S	S
Heated, remote exterior mirrors	-	S	S	-
7,500 Lbs. hitch, 7-pin connector (E450)	S	S	-	-
5,000 Lbs. hitch, 7-pin connector (Chevy/E350)	S	S	-	-
4,200 Lbs. hitch, 7-pin connector	-	-	S	-
Spare tire	-	S	-	S
Roof ladder	S	S	S	-

EXTERIOR	LE	CL	MBS	TS
Integrated entry step	S	S	-	S
Power entry step with motion sensor light	-	-	S	-
Automatic leveling system (4-point) (N/A on Chevy 2501TS only)	O	O	O	-
Stabilizer jacks (2-point)	-	-	S	-
LP quick connect	-	S	S	S
Full body paint	-	O	O	O
Outside shower	-	S	S	S
Outside 12V LED TV (See floorplans)	-	O	O	-
Black tank flush	S	S	S	S
CAB AREA	LE	CL	MBS	TS
8" Touch screen Carplay/Android radio with USB and Bluetooth (MBS - 10")	-	S	S	S
Cab area privacy curtain	S	S	-	S
Magnetic privacy shades	-	-	S	-
Power windows and door locks	S	S	S	S
Keyless entry (N/A Chevy)	S	S	S	S
Color back-up camera with rear view monitor	S	S	S	S
Side view cameras	S	S	S	S
Swivel driver seat (Ford only)	-	O	-	S
Power driver seat (Ford only, N/A with swivel option)	-	O	-	-
Swivel passenger seat (Ford only)	-	O	-	S
Ultra leather driver and passenger seats (N/A Chevy)	-	S	-	S
Power leather swivel driver and passenger seats	-	-	S	-
KITCHEN	LE	CL	MBS	TS
Recessed 3-burner range with flush glass cover	S	S	-	-
Recessed 2-burner range with flush glass cover	-	-	S	S
Convection microwave	S	S	S	S
10.7 Cu. ft. 12V refrigerator	S	S	S	-
5.3 Cu. ft. lightweight LP/Electric 110V Refrigerator	-	-	-	S
Sink covers	-	S	S	S
Full extension ball bearing drawer guides	S	S	S	S
Flip-up countertop extension	S	S	S	-
Solid surface galley	-	-	S	-
Cordless 12V charging plate	S	S	S	-
BATHROOM	LE	CL	MBS	TS
Lightweight composite toilet	S	S	S	S
Glass shower door	-	S	-	S
Lightweight Arcadia shower door	S	-	S	-
Towel bar, tissue, toothbrush and soap holder	-	S	S	S
Electric roof fan	S	S	S	S
Shower head with flexible extension	S	S	S	S
Motion sensor light	S	S	S	S
Shower skylight	S	S	S	S
BEDROOM	LE	CL	MBS	TS
Upgraded memory foam mattress	S	S	S	S
Bedsread (N/A TS2371)	S	S	S	S
Black-out roller shades	S	S	S	S
12V Bedroom TV	-	S	S	S
LIVING ROOM	LE	CL	MBS	TS
Dream dinette (N/A with U-shape dinettes)	-	S	S	-
Black out roller shades	S	S	S	S
12V LED flat panel adjustable side TV	S	S	S	S
Child seat head tethers in dinette	S	S	S	-
Maxx Air multi-speed power fan with cover	S	S	S	S
LED floor lighting	-	S	S	-
12V USB charging station	-	S	S	S



PRE-DELIVERY INSPECTION FACILITY

20,000 square feet of quality assurance. The bare essentials for a premium product. This state-of-the-art facility gives immediate daily feedback to production for quality assurance in every unit built.

24/7 EMERGENCY ROADSIDE ASSISTANCE WITH VEHICLE PURCHASE*

TOWING
JUMP-STARTS
TIRE CHANGES
FLUID DELIVERY
LOCKOUT
SERVICE

WINCH-OUT
MOBILE MECHANIC
TECHNICAL
SUPPORT
DEALER LOCATOR
SERVICES



*VALID FOR 1 YEAR FROM DATE OF PURCHASE



Learn More
Scan this barcode using a QR Reader on your smart phone to learn more about Forest River.



A Berkshire Hathaway company.

All information contained in this brochure is believed to be accurate at the time of publication. However, during the model year, it may be necessary to make revisions and Forest River, Inc., reserves the right to make all such changes without notice, including prices, colors, materials, equipment and specifications as well as the addition of new models and the discontinuance of models shown in this brochure. Therefore, please consult with your Forest River dealer and confirm the existence of any materials, design or specifications that are material to your purchase decision.

©2020 Forester - a Division of Forest River, Inc. - a Berkshire Hathaway Company 11/2020



www.ForestRiverBuyLocal.com



FORESTER

BY FOREST RIVER

Visit: www.forestriverinc.com/forester

914 CR 1 • Elkhart, In 46514 • 574.262.2212 • 800.445.2825

Your Local Forester Dealer